



ANJANEYA CONVEYING SYSTEMS

WE KNOW FOR **QUALITY & COMMITMENT**

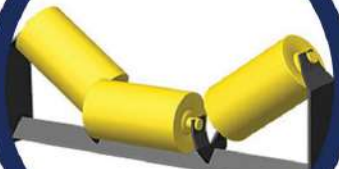
ROLLER



CONVEYORS SYSTEM



IDLERS



EXPERTS IN

- ALL TYPES ANCHOR
- IMPACT ROLLERS
- CARRYING ROLLER
- RETURN ROLLER

- IDLER
- PULLEY, TAIL PULLEY
- FRAME
- CONVEYOR SYSTEM

ADDRESS :-

Hridayansh Bhawan, GT Road, Aurai, Bhadohi (S.R.N.), U.P. PIN CODE :- 221301

CONTACT DETAILS

+91 94102 84729

enquiry@anjaneyaa.com
www.anjaneyaa.com



ANJANEYA CONVEYING SYSTEMS

INTRODUCTION



"ANJANEYA ENTERPRISES" HAD COMMENCED ITS ADVANCEMENT AS MANUFACTURER OF IDLERS / ROLLERS, CONVEYORS SYSTEM, PULLEYS, ALL KINDS OF INDUSTRIAL SUPPLY CONVEYOR RUBBER BELTS ETC. ALONG WITH EXECUTION OF JOB WORKS IN **CEMENT, ROAD CONSTRUCTION, CRUSHER UNITS, CERAMIC, COAL, POWER PLANT, SUGAR PLANT, PAPERS, FERTILIZERS, MINES, CHEMICAL, SALTS, GOVERNMENT DEPARTMENT, SEMI GOVERNMENT DEPARTMENT** AND ALL OTHER ALLIED INDUSTRIES SINCE LAST TEN YEARS.

WE ARE PIONEER IN PULLEY, ROLLER, IDLERS, CONVEYOR SYSTEM MANUFACTURING, AND TODAY WE FEEL PROUD TO HAVE LEARNT THE QUALITY REQUIREMENT AND HAVE TAKEN OVER THIS RESPONSIBILITY. IN THE PAST FEW DECADES, FEW INDUSTRIES HAVE CHANGED MORE RAPIDLY THAN THE MATERIAL HANDLING INDUSTRIES IN INDIA. TECHNOLOGICAL ADVANCES AND GROWING CLIENT NEEDS, COUPLED WITH CUSTOMER AWARENESS HAVE CREATED A REQUISITE FOR A NEW KIND OF ORGANIZATION WITH A MUCH BROADER RANGE OF LARGELY SOPHISTICATED AND SPECIALIZED SKILLS AND CAPABILITIES, WHICH WAS MORE OFTEN THAN NOT FOUND IN THE CONVENTIONAL COMPANIES.

CONVEYOR ACCESSORIES HAVE BEEN RECOGNIZED AS CRITICAL COMPONENT OF CONVEYOR, FAILURE WHICH COULD LEAD TO EXTENSIVE DAMAGE AND DOWNTIME, HENCE SPECIAL ATTENTION HAS BEEN GIVEN TO DESIGN TO DEVELOP THE MOST DEPENDABLE DESIGNS AND TECHNICAL KNOWHOW.

WITH THIS BACKGROUND, WE ARE CAPABLE TO MEET CRITICAL CONVEYER HANDLING NEED WITH EFFICIENCY, ACCURACY AND DEPENDABILITY AND HENCE IT WOULD BE AN HONOR TO HAVE OUR NAME AS AN ELITE VENDOR IN YOUR VENDOR'S LIST.





ANJANEYA CONVEYING SYSTEMS

INDUSTRIAL-STRENGTH



QUALITY POLICY :

ANJANEYA CONVEYING SYSTEM IS ENGAGED IN THE BUSINESS OF DESIGN, MANUFACTURING AND SUPPLY OF MATERIAL HANDLING EQUIPMENTS AND CEMENT FACTORY MACHINERY.

OUR COMMITMENT IS TOTAL CUSTOMER SATISFACTION

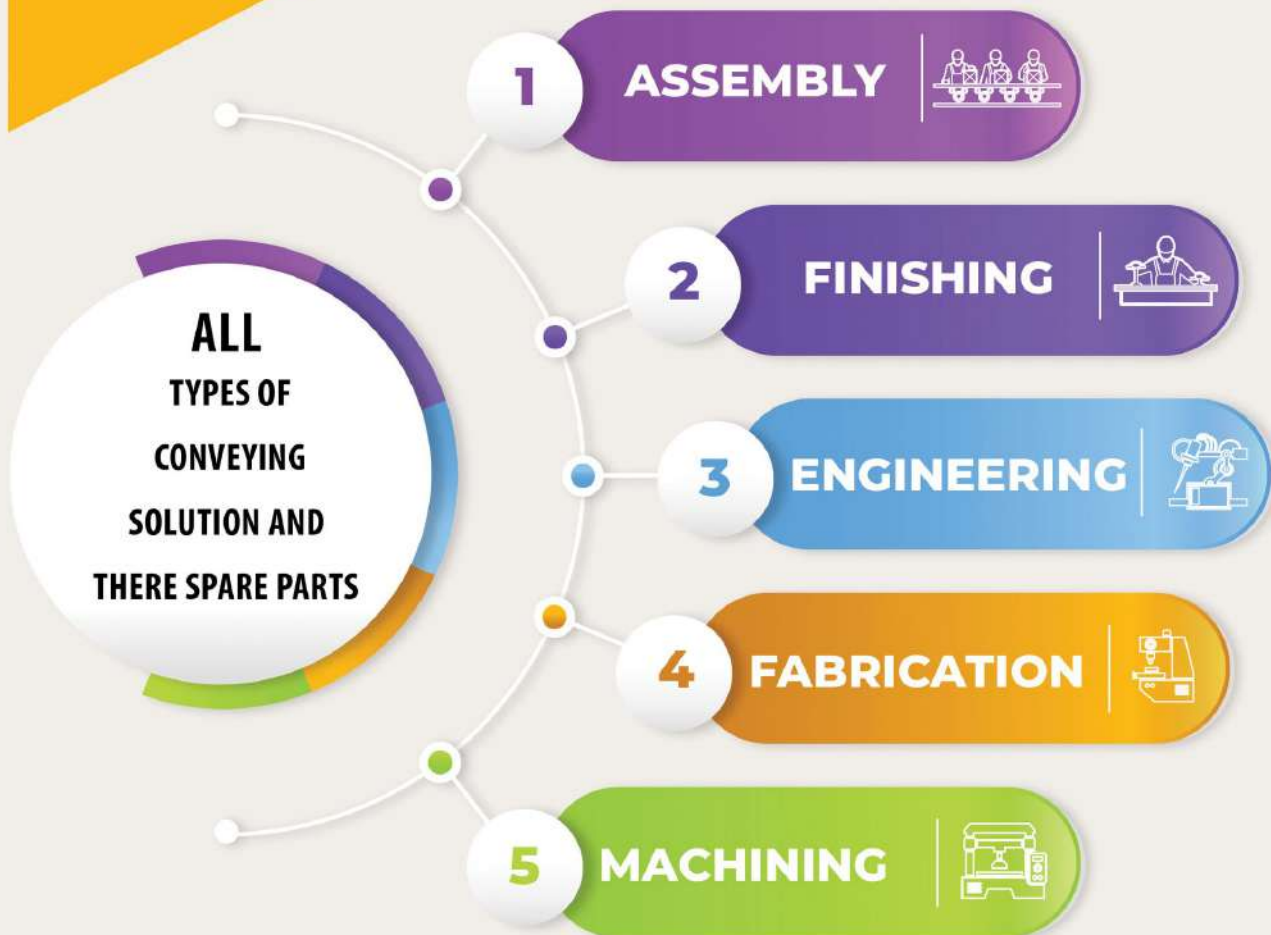
WE SHALL ACHIEVE BY:

- * CONTINUALLY TRY TO MAINTAIN & IMPROVE QUALITY STANDARD.
- * STRICTLY ADHERING TO THE QUALITY MANAGEMENT SYSTEM AS PER **ISO:9001:2008** FOR OUR OPERATION AND MONITORING THE SAME PERIODICALLY FOR IT'S EFFECTIVENESS.
- * WE REGULARLY ENSURE THAT OUR SERVICES MEET THE CUSTOMER REQUIREMENTS AND COMPLY WITH APPLICABLE STATUARY AND REGULATORY REQUIREMENTS.





ANJANEYA CONVEYING SYSTEMS



MAKING PRODUCTS THAT MAKE A DIFFERENCE

OUR ENGINEERING TEAM IS DEDICATED TO MAKE OUT THE PERFECTION OUT OF THE PERFECT. THE QUICK RESPONSIVENESS, PROACTIVITY AND WORK ETHICS THAT WE ADHERE IS ALL CENTERED TO ONE PRIMARY GOAL TO BECOME THE BEST IN THE MARKET.



ANJANEYA CONVEYING SYSTEMS

WHAT MAKES DIFFERENT US ?

**WHAT
MAKES US
DIFFERENT
FROM OTHERS,**

1



PRECISION

Error free structure keeping the safety paramount.

2



QUALITY

Premium Quality to withstand heavy duty work without failure and ensuring long durability.

3



PROMPT DELIVERY

Apt delivery of the product as per the commitment.

4



QUICK AFTER SALES SERVICE

We value your precious time, our team ensure to deliver the quick service for spare or any other mechanical requirement.



ANJANEYA CONVEYING SYSTEMS

ROLLER DETAILS

1. ROLLER BODY :

THE SHELL IS MADE OF PRECISION SMOOTH SURFACE 'ERW' STEEL TUBE AS PER IS:9296.

2. ROLLER ENDS :

BEARING HOUSING MADE OF PRESSED STEEL SHEET WITH CALIBRATED BEARING SEAT, ARE WELDED WITH THE PERIPHERY OF THE STEEL TUBE, FOR MAXIMUM STRENGTH.

3. SPINDLE :

SPINDLE LESS ARE MADE FROM M.S. BRIGHT BARS AND ARE PRECISION GROUND AT BEARING AND SEAL SEATING AREAS.

4. BEARING :

PRECISION SINGLE-ROW DEEP GROOVE BALL BEARINGS WITH 03 CLEARANCES ARE PROVIDED. DISTANCE BETWEEN BEARINGS AND POINT OF SUPPORT AT THE SHAFT IS VERY SHORT AND THUS ENSURE HIGHER LOAD CARRYING CAPACITY AND LONGER SERVICE LIFE.

5. SEALING :

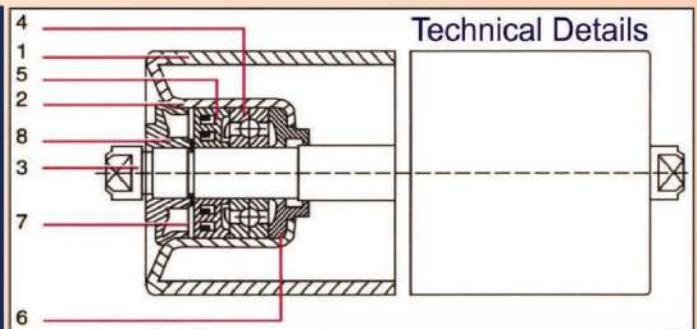
THE DOUBLE MULTI LABYRINTH SEAL ENSURES OPTIMUM PROTECTION AGAINST THE ENTRY OF DUST AND DILL IN TO THE BEARINGS.

6. INNER SEAL

7. DUST COVER

8. RAIN CAP.

WE CAN ALSO DESIGN AND MANUFACTURE IDLER ROLLERS FOR SPECIAL DUTY.



LUBRICATION;

HI-LITHIUM BASE GREASE IS FILLED IN MEASURED QUANTITIES IN BEARING AND SEALS, AND ROLLERS ARE SEALED FOR LIFE.

ADJUSTABILITY:

IDLER ROLLERS ARE MANUFACTURED AS PER IS:8598 FOR BELT WIDTH AS PER IS:4776 AS WELL AS TO SUIT EXISTING CONVEYOR FRAME BY PROVIDING ADAPTER.



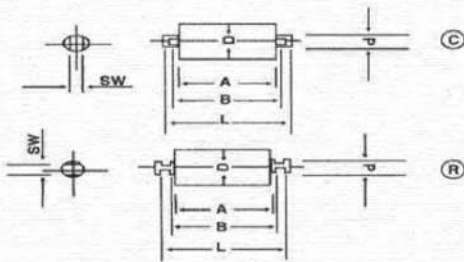


ANJANEYA CONVEYING SYSTEMS

BELT CONVEYOR IDLERS

SERIES : 6204 / 6205

SERIES - REVS						
STANDARD - IS : 8598 / 4776						
TUBE DIA & THICKNESS AS PER IS : 9295						
		L	M	H	E.H.	
1)	88.9 dia	-	3.25	4.05	4.85	-
2)	114.3 dia	-	3.65	4.5	5.4	6.3
3)	139.7 dia	-	4.5	4.85	5.4	6.3
4)	165.1 dia	-	4.5	4.85	5.4	6.3
		d =	20 mm			
		sw =	14 mm			
All dimension are in mm.						



1. BELT WIDTH NOT COVERED UNDER IS.
2. ROLLERS WITH 76.2 MM. 101. MM. 127 MM & 152.4 MM. DIA CAN BE MADE AS PER CUSTOMERS SPECIFIC REQUIREMENT.
3. IMPACT IDLERS WILL HAVE RUBBER RINGS (SHORE HARDNESS 60±65) PRESS FITTED ON THE 76.1, 88.9/114.3 DIA TUBE AND LOCKED AT BOTH ENDS,
4. WEIGHT OF ROLLER BASED ON MEDIUM DUTY TUBE.

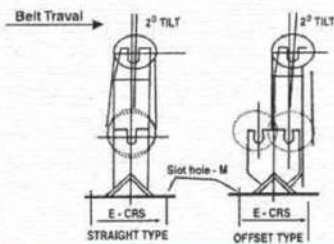
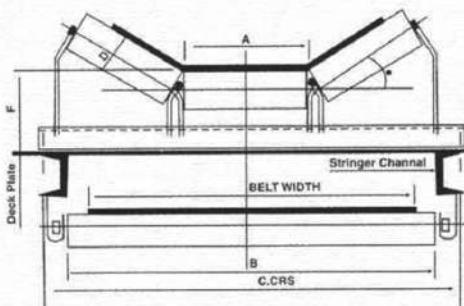
Belt Width mm	Roller Dia. mm	Flat Top / Return Idler					2 Roll Top Idler					3 Roll Top Idler				
		Dimension in mm			Wt. in Kg.		Dimension in mm			Wt. in Kg.		Dimension in mm			Wt. in Kg.	
BW	D	A	B	L	Rotating Parts	Total	A	B	L	Rotating Parts	Total	A	B	L	Rotating Parts	Total
400	88.9	500	508	536	5.6	7.1	250	258	276	3.5	4.2	160	168	186	2.6	3.2
	114.3				7.6	9.0				4.5	5.3				3.5	3.9
450	88.9	550	558	586	6.0	7.7	290	298	316	3.8	4.7	180	188	206	2.9	3.4
	114.3				8.1	9.8				5.0	5.9				3.7	4.2
500	88.9	600	608	636	6.4	8.3	315	323	341	4.0	5.0	200	208	226	3.0	3.6
	114.3				8.8	10.6				5.3	6.3				3.9	4.5
600	88.9	700	708	736	7.3	9.4	350	358	376	4.3	5.3	235	243	261	3.3	4.0
	114.3				10.0	12.0				5.7	6.8				4.3	5.0
650	88.9	750	758	786	7.7	10.0	380	388	406	4.6	5.7	250	258	276	3.4	4.2
	114.3				10.6	12.9				6.1	7.3				4.5	5.3
750	114.3	850	858	886	11.8	14.3	415	423	441	6.5	7.8	290	298	316	5.0	5.9
	139.7				14.4	17.0				8.5	9.7				6.4	7.5
800	114.3	950	958	998	12.0	16.6	465	473	491	7.1	8.9	315	323	341	5.3	6.5
	139.7				15.9	19.5				9.3	11.0				6.8	8.0
900	165.1	1050	1058	1098	20.3	23.9	530	538	556	11.0	12.7	350	358	376	8.0	9.2
	114.3				14.2	18.2				7.9	9.9				5.7	7.0
1000	139.7	1150	1158	1198	17.4	21.4	530	538	556	10.3	12.3	350	358	376	7.4	8.7
	165.1				22.2	26.2				12.2	14.2				8.8	10.0
1200	114.3	1400	1408	1442	15.4	19.8	600	608	626	8.8	11.0	380	388	406	6.1	7.5
	139.7				18.9	23.3				11.5	13.7				7.9	9.3
1400	165.1	1600	1608	1642	24.1	28.5	800	808	832	13.5	15.8	530	538	562	9.3	10.7
	114.3				18.6	25.4				10.1	13.5				7.3	9.5
1500	139.7	1700	1708	1742	24.6	31.4	850	858	882	13.2	16.8	565	573	597	9.4	11.7
	165.1				29.0	35.9				15.6	19.0				11.1	13.4
1600	114.3	1800	1808	1842	21.0	28.8	900	908	932	11.3	15.2	600	608	632	8.0	10.6
	139.7				27.8	35.6				14.8	18.7				10.5	13.0
1800	165.1	2000	2008	2042	32.9	40.7	1000	1008	1032	17.5	21.4	670	678	702	12.3	14.9
	114.3				22.2	35.5				11.9	16.0				8.5	11.3
2000	139.7	2200	2208	2242	34.8	43.0	1100	1108	1132	16.5	22.6	750	758	782	13.0	15.8
	165.1				31.2	45.6				16.8	23.7				9.0	13.8
	114.3				26.0	42.0				13.9	21.8				9.9	15.2
	139.7				34.4	50.4				18.2	26.1				12.9	18.2
	165.1				40.7	56.7				21.5	29.4				15.2	20.5
	114.3				28.4	46.0				15.1	23.6				10.9	16.8
	139.7				37.7	55.2				19.9	28.3				14.2	20.1
	165.1				41.3	58.8				23.4	31.9				16.7	22.6





ANJANEYA CONVEYING SYSTEMS

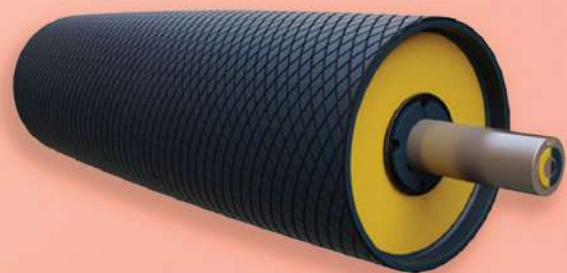
BELT CONVEYOR IDLERS



20°, 30°, 35° Troughing Idler Set (Plain & Impact Type with Stringer & Return Idler)

Belt Width	Dimensions in mm.				F				M (Slot Size)
	A	B	C	E	Upto 88.9 D	Upto 114.3 D	Upto 139.7 D	Upto 165.1 D & above	
* 400	160	500	690	165 / 200	200	225	-	-	14 x 25
450	180	550	740	165 / 200	200	225	-	-	14 x 25
500	200	600	790	165 / 200	200	225	-	-	14 x 25
* 600	235	700	890	165 / 200	200	225	-	-	14 x 25
650	250	750	940	200	200	225	-	-	18 x 30
* 750	290	850	1040	200	200	225	275	-	18 x 30
800	315	950	1090	200	200	225	275	290	18 x 30
* 900	350	1050	1190	200	200	225	275	290	18 x 30
1000	380	1150	1290	200	200	225	275	290	18 x 30
1200	465	1400	1490	200	200	240	275	290	18 x 30
1400	530	1600	1690	200	-	240	275	290	18 x 30
* 1500	565	1700	1775	200	-	240	275	290	22 x 40
1600	600	1800	1900	200	-	240	275	290	22 x 40
1800	670	2000	2100	200	-	240	275	290	22 x 40
2000	750	2200	2300	200	-	240	275	290	22 x 40

BELT WIDTH NOT COVERED UNDER IS. ALL DIMENSIONS ARE IN MM.





ANJANEYA CONVEYING SYSTEMS

ROLLER TYPES

IMPACT ROLLERS :- ARE USED AS CARRYING ROLLERS INSTEAD OF NORMAL STEEL ROLLERS AT A LOADING POINT. ON STEEL ROLLER THERE ARE RUBBER RINGS ASSEMBLED, SIDE BY SIDE, TO ABSORB THE WEIGHT AND IMPACT OF MATERIAL FALLING ONTO THE BELT. AT THE SAME TIME IMPACT ROLLERS REDUCE THE SHOCK AND VIBRATION THROUGH THE STEEL STRUCTURE.



CARRYING ROLLERS:- ARE USED TO SUPPORT THE CONVEYOR BELT AND ARE INSTALLED ON THE GROOVE SHAPE FRAME, GROOVE SHAPE FORWARD INCLINED IDLER FRAME AND TRANSITION IDLER FRAMES. ROLLERS INCLUDE HIGH QUALITY BEARING, MULTI-LABYRINTH SEALING, GREASED AND SEALED FOR LIFE AND CRITICAL SPECIFICATIONS ESSENTIAL FOR HIGH PERFORMANCE.



RETURN ROLLER:- THE STRAIGHT TRACKING OF THE BELT MAY BE COMPROMISED BY THE TYPE OF CONVEYED MATERIAL, ESPECIALLY WHEN THIS MATERIAL IS STICKY AND THEREBY ADHERES EASILY TO THE BELT SURFACE.

IN THIS CASE, MATERIAL IS ALSO DEPOSITED ON THE RETURN ROLLERS THAT SUPPORT THE BELT, ADDING AN IRREGULAR ADDITION OF SCALE TO THE ROLLER ITSELF.





ANJANEYA CONVEYING SYSTEMS

CONVEYOR SYSTEM / PULLEY / CONVEYOR FRAME

CONVEYOR SYSTEM :- A CONVEYOR SYSTEM IS A FAST AND EFFICIENT MECHANICAL HANDLING APPARATUS FOR AUTOMATICALLY TRANSPORTING LOADS AND MATERIALS WITHIN AN AREA. THIS SYSTEM MINIMIZES HUMAN ERROR, LOWERS WORKPLACE RISKS AND REDUCES LABOR COSTS — AMONG OTHER BENEFITS. THEY ARE USEFUL IN HELPING TO MOVE BULKY OR HEAVY ITEMS FROM ONE POINT TO ANOTHER.



PULLEY :- THE PULLEY IS CONTAINED WITHIN THE BELT AND HELPS IT TO ROTATE FREELY AROUND THE ENDS OF THE CONVEYOR. IT IS GENERALLY FREE-SPINNING, WITH BEARINGS MOUNTED EITHER INSIDE OR ON THE ENDS OF THE PULLEY.



CONVEYOR FRAME :- THE CONVEYOR FRAME IS USED ALONGSIDE SEVERAL SIMILAR BLOCKS TO LINK INVENTORIES ON A SMALL-GRID SHIP OR STATION INTO A NETWORK. ONCE ESTABLISHED, THE CONVEYOR NETWORK ALLOWS ITEMS TO BE EASILY TRANSFERRED BETWEEN BLOCKS AND WILL AUTOMATICALLY MOVE ITEMS AS NEEDED.



REFRACTORY ANCHORS :- SPECIALIZE IN MANUFACTURE OF ALLOYS THAT CAN RESIST HIGH TEMPERATURES AND STAINLESS FASTENERS THAT ARE USED FOR ANCHORAGE OF THE REFRACTORIES IN PROCESS EQUIPMENT AND FURNACES.





ANJANEYA CONVEYING SYSTEMS

LATHE / MILLER / PLASMA CUTTING



CNC LATHE



CNC DOUBLE COLOUM MILLER



CNC PLASMA CUTTING



VERTICAL LATHE



ANJANEYA CONVEYING SYSTEMS



CNC LATHE



LATHE



ANJANEYA CONVEYING SYSTEMS

V-PLOUGH FEEDER / DIVERTER



TYPE: MECHANICAL LINK TYPE

- MODEL: CEPL-VPF-800
- MODE OF CONTROL: REMOTE/ LOCAL
- BELT WIDTH: 800 MM
- ACTUATOR: ELECTRO-MECHANICAL LINEAR ACTUATORS.
- STROKE: 280 MM
- VELOCITY: 15 M/S

TYPE: MECHANICAL LINK TYPE

- MODEL: CEPL-VPF-1200
- MODE OF CONTROL: REMOTE/ LOCAL
- BELT WIDTH: 1200 MM
- ACTUATOR: ELECTRO-MECHANICAL LINEAR ACTUATORS.
- STROKE: 230 MM
- VELOCITY: 10 M/S

TYPE: MECHANICAL LINK TYPE

- MODEL: CEPL-VPF-1600
- MODE OF CONTROL: REMOTE/ LOCAL
- BELT WIDTH: 1600 MM
- ACTUATOR: ELECTRO-MECHANICAL LINEAR ACTUATORS.
- STROKE: 220 MM
- VELOCITY: 8-10 M/S

SPECIFICATION

- SPECIALLY DESIGNED V ARM IS PROVIDED WITH WEAR RESISTANCE LINER MADE FROM WEAR RESISTANCE STEEL.
- VARIOUS OPTIONS OF PLOUGH DRIVE SYSTEM LIKE HYDRAULIC / PNEUMATIC / ELECTRO MECHANICAL ACTUATORS.
- VARIOUS CONTROL SCHEMES TO PROVIDE EITHER LOCAL OPERATION FROM THE MACHINE OR REMOTE OPERATION FROM CONTROL STATION WITH SELECTOR SWITCH OR BOTH.
- MACHINE IS PROVIDED WITH ALL SAFETY CONTROL AND LIMIT SWITCHES, SUCH AS ANTI-COLLISION SWITCH, AUTOMATIC STOP SWITCHES, SENSORS FOR ARM TRAVEL.
- MACHINE CAN BE PROVIDED WITH ASSEMBLY CONSISTING OF SIDE DISCHARGE CHUTES WITH WEAR PLATES.





ANJANEYA CONVEYING SYSTEMS

DESIGN & DEVELOPMENT CENTRE / MANUFACTURING FACILITY / PROJECT ENGINEERING

DESIGN & DEVELOPMENT CENTRE

SUPPORTED WITH HIGH END CAD/CAM/CAE SOFTWARES.

SUPPORTED WITH HIGH END ANALYSIS SOFTWARES FOR FEA/FMEA

DESIGN VALIDATION TOOLS AND NETWORK SOLUTIONS.

MANUFACTURING FACILITY

STATE-OF-ART PRECISION FABRICATION UNIT WITH LATEST EQUIPMENTS INCLUDING FOR 25 MT SINGLE UNIT CAPACITY.

PRECISION MACHINE SHOP WITH LATEST TECHNOLOGY AND HEAVY DUTY MACHINES FOR LARGE SIZE PRODUCTS.

STATE-OF-ART FOUNDRY FACILITY TO PRODUCE ALL GRADES OF PREVAILING ENGINEERING METALS.

PROJECT ENGINEERING

EXPERIENCED & TRAINED MANPOWER FOR PROJECT EXECUTION. QUALIFIED & GLOBAL EXPOSED MANAGERS & METALLURGISTS FOR CONCEPTUALIZATION AND EXECUTION OF PROJECTS AND CUSTOMER NEEDS.

TROUBLE SHOOTING & PRODUCTIVITY ENHANCEMENT SOLUTIONS ON CLIENT SITE.



ANJANEYA CONVEYING SYSTEMS

WE ALSO MANUFACTURE....

STRUCTURE SCREW CONVEYORS

SEVERAL TYPES OF SCREW CONVEYORS ARE DESIGNATED TO HANDLE A SPECIFIC MATERIAL BEHAVIOR. BULK MATERIALS MAY BE ABRASIVE, NON-FREE-FLOWING, FLUIDIZING, HYGROSCOPIC, OR HAZARDOUS.

Basic Screw Conveyor Operation



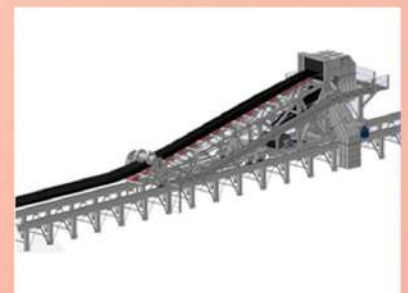
SHUTTLE CONVEYOR

SHUTTLE CONVEYORS ARE FRAMEWORK OR CHANNEL TYPE BELT CONVEYORS MOUNTED ON TROLLEYS WITH WHEELS WHICH TRAVEL ON RAILS. THEY CAN BE EQUIPPED WITH OWN DRIVE WHICH GIVES THEM ABILITY TO MOVE ALONG THE RAILS IN BOTH DIRECTIONS. THIS MOVEMENT CAN BE FULLY AUTOMATED OR CONTROLLED BY AN OPERATOR.



TRIPPER CONVEYORS

A BELT TRIPPER IS USED TO "TRIP" THE MATERIAL OFF THE CONVEYOR AT SPECIFIED LOCATIONS BETWEEN THE TERMINAL PULLEYS.



DIVERTING GATES

DIVERTER GATES CONSIST OF A PIVOTING GATE BLADE LOCATED INSIDE AN INVERTED Y-SHAPED HOUSING. THE GATE BLADE CAN BE POSITIONED TO DIVERT BULK MATERIALS TO EITHER SIDE OF THE HOUSING.





ANJANEYA CONVEYING SYSTEMS

V-PLOUGH FEEDER / DIVERTER

Technical Specification for V Plough Feeders

1.	TY PE	Motorized with roller tables
2.	Design Capacity	385/350 TPH
3.	Material of Construction	
	a. V- Plough Blade	10 Thk. MS mother plate with SS 409 Liner
	b. Mounting Structure	MS IS 2062
4.	Operation	Auto Through Motorized Actuators
5.	Arrangement of diverters	V-plough blades are above the carrying belt and the roller table are between carrying and return belt. Both the blade and roller table are connected by suitable linkage, so that when blades is lowered on the belt for diverting the material the roller table shall move up flattening the belt below the V- Plough blade to facilitate smooth diversion of material
6.	V- Plough Mounting Structure	Four legged structure designed to withstand the impact and horizontal thrust of moving material while diverting
7.	Limit Switches	Suitable limit switch are provided to facilitate interlocking / indication of status of V- plough in control room



PRODUCT DESCRIPTION AND APPLICATION

- V PLOUGH FEEDERS ARE USED AS DIVERTERS FOR DIVERSION OF POWDER, BULK & SOLIDS FROM BELT DURING CONVEYING.
- V PLOUGH MANUFACTURED BY CEPL PROVIDES A CONVENIENT MEAN FOR DELIVERING MATERIAL FROM A RECLAIM BELT CONVEYOR TO LONGITUDINAL SLOT BUNKERS. ADVANTAGES
- ADAPTABILITY TO DIFFERENT MATERIALS AND WHETHER CONDITIONS PERMIT THE PLOUGH FEEDER TO BE USED WHERE OTHER EQUIPMENT FAIL.
- IT CAN BE USED FOR VERITY OF MATERIALS LIKE COAL, COKE, LIMESTONE, DOLOMITE, IRON ORE ETC.
- ENVIRONMENTAL FRIENDLY, POLLUTION IS MINIMUM.



ANJANEYA CONVEYING SYSTEMS

OUR VALUABLE CLIENTS

MANY MORE PRODUCTS & EQUIPMENTS ARE DESIGNED, MANUFACTURED & SUPPLIED TO VARIOUS CORPORATES OF DIFFERENT SEGMENTS, TO NAME A FEW

adani





ANJANEYA CONVEYING SYSTEMS



ANJANEYA CONVEYING SYSTEMS

ANJANEYA CONVEYING SYSTEMS

ANJANEYA CONVEYING SYSTEMS

ADDRESS :-

Hridayansh Bhawan, GT Road, Aurai,
Bhadohi (S.R.N.), U.P.
PIN CODE :- 221301

CONTACT DETAILS :-

+91 94102 84729

E-MAIL :- enquiry@anjaneyaa.com

WEBSITE :- www.anjaneyaa.com

THANK YOU